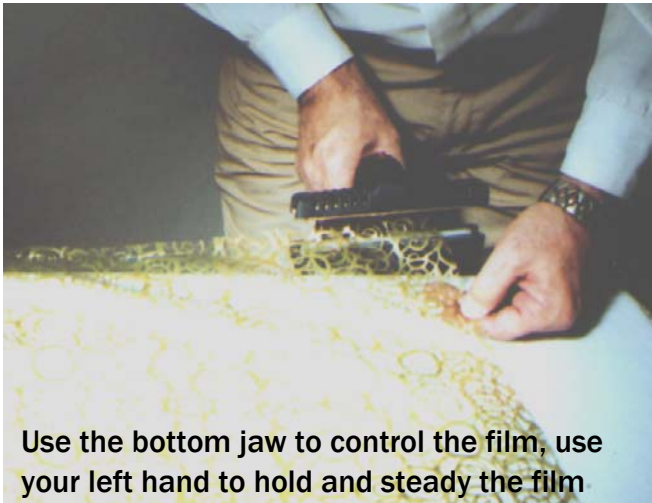


Little Magic Miracle Heat Sealer® Instructions for Cello Gift Basket Bags

To make Cello Gift Basket Bags any size any shape out of clear and printed Cellophane use these instructions. The Cello-Heat Sealer will need a 15 minutes warm up period. It does not require any special wiring, simply plug into any wall outlet. The unit draws about 25 watts which is like a small 25 watt bulb. It can be plugged in all day. Do not place any plastic material on the top of the sealer as it will melt and could harm the internal parts.



Use the bottom jaw to control the film, use your left hand to hold and steady the film



Step 1: Warning Please do not seal any Poly Bags with this sealer or you will ruin the top and the base jaws!

Poly Bags have a milky appearance to them! Sealing a Poly bag will leave a residue on the jaws. When using the Sealer to seal Cello bags use a Q-tip to apply a small amount of light weight 3 in 1 oil to coat the upper jaw teflon fabric on the top housing. This will keep the cello film from sticking to the brass heat element of the sealer! To wrap a Gift Basket, first take a measurement around the widest part of the basket.

Do the same from the top under and back to the top of the Gift! If you want a flare top add twice the value!

Step 2: Good seals require pressure, heat and time! Sealing Cello films only requires one half second to join the film together! So squeeze firmly and release the jaw! On the sides of the sealer are chrome phillip's head screws! Use these as you're aiming point when aligning to overlap seams! Your head must be directly over the end of sealer so that you can interlock each seal! Your first seal will be 6", the next seal can only be 5 1/2" so that you can link it up with the first seal! Insert the sealer into the film about 1/2" not any more then that! Trimming the seam can only be done with a scissors. You are making a Simple seal!

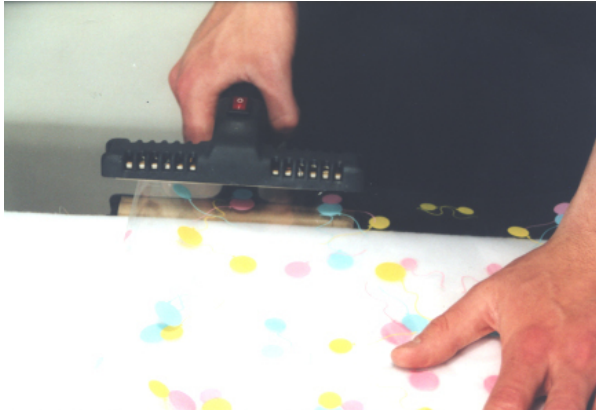


Step 3: To make a Cello Basket bag pull the film out across your table and fold back in half! To make a bag simply seal both sides of the film! Gather the film in your hands like you were going to put a sock on! Place Gift inside the bag!

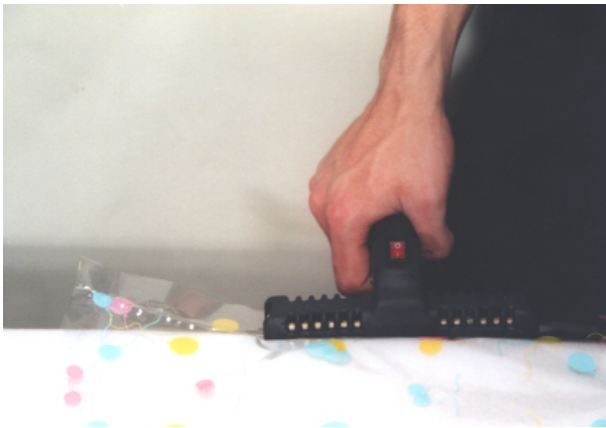


Step 4: Pull the film up as far as possible. Gather the excess film up in a flare and use a twist tie to close it! Add your Bow! Tape any excess Cello around the back of the Gift! Seams can be forced open with too much pressure!

Since all Cello Films comes on a roll in a single lay flat sheet concept you will have to pre-cut the Cello so that you can fold it over much like Shrink Film which is center folded. To form a cello bag take a tape measure and measure the widest part of the Gift from left to right, and then double the measurement. Now add 10% to that size. This will give you enough play to get the bag on the Gift. Do the same with the height element. Then follow the instructions below. These instructions may seem difficult in the beginning but once you realize how easy it is to make a bag you should be able to make a large cello bag in about 30 seconds.



Step 5: Bring the pre-cut center folded cellophane to the edge of the table. You will need to seal the opened sides. Take the sealer in hand and place your left hand on the Cello film so that it will not move during the sealing process. Place your head directly over the sealer top jaw and the edge of the Cello. With the jaw open, slide the jaw into the Cello film about a half an inch from the edge. Squeeze down on the Jaw for only a half a second. This is a very quick but firm seal. Release the jaw. You have made your first seal. Don't be afraid of the rough edge. You can cut away any rough edge!



Step 6: You have made your first Seal! To make the next inter-locking seal of 5 ½". move your left hand to another position down the film. Next you want to eye up the silver screw directly over the first seal! Again, squeeze the sealer closed and only hold it for one half second. Release the jaw and you have now made an 11" seal on the Cello that has been inter-locked together. The interlocking is very important to keep the seams from running under pressure. Now you will repeat the same actions that you have done before. Move the sealer jaw down the edge of the film and align the silver aiming screw with the Cello seam you have made and squeeze for one half second and release the jaw. Remember to move the hand down that is holding the film in place. Depending on the width of the bag you may have to make a fourth or fifth seal. In the beginning it will be slow for you but once you understand the simple concept you will become an expert Cello bag maker in 30 seconds.



Step 7: Once you have sealed one side and then the other side of the cello you will now have a bag since the opposite side is already folded. The edges may be slightly crude but don't worry about that now. You are ready to place the Gift inside the bag. Depending on how you do it, some people will drop the bag over the top and push the excess under the basket. Other people will place the Gift in the Bag and pull the excess film to the top and make a flare top gift.



Step 8: If the bag is too big for the Basket and you want to trim the excess down simply cut the excess film away with a scissor and turn your Cello Sealer on its side and go in and make side seals on the Cello film. You can also turn the sealer upside down and grab the handle of the sealer so the cord is coming out of the top. Use this position when sealing the top of the bag closed.

To see a Video of the instructions visit: www.nationalgiftpackaging.com

Sealing Small Cello Bags, Clear and Printed

If you are sealing much thicker gauge cello films you may need to hold the sealing head down on the film for an extra half second. In this case you would then hold the seal for a full second dwell time. Here you want to check to see if you are pulling any residue off the bag. If so then decrease the dwell time by one quarter of a second and that will eliminate any residue on the Teflon and the base pad. Try and remove any residue very carefully!

Using a mouse pad under your sealer will control the sealer on any smooth surface!



Step 8: Sealing a bag with a horizontal seal takes only about a half second. If you are sealing a printed film be careful that you do not drag any of the colored ink or residue onto the Teflon tape.



Step 10: Simply lay the open end of the bag in the jaws of the sealer and press down and release the jaw and the seal is made. This will work on 90% of the bags you will need to seal.



Step 9: The formula for making a good seals is time, pressure and heat. Using very thin cello films you don't need a lot of time because it is such a thin product so in many cases you simply have to squeeze once firmly and the seal is made and complete. Too much time and the film will become molten and run all over the Teflon. Top jaw cover!

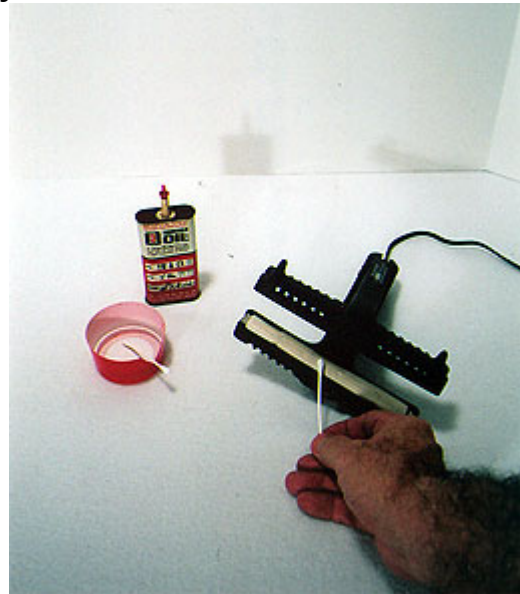


Step 11: Here you have turned the sealer up side down and have placed the open bag into the Jaw. You need to reverse you're hand for more squeeze ability. Again it is just a very quick seal and it's completed.

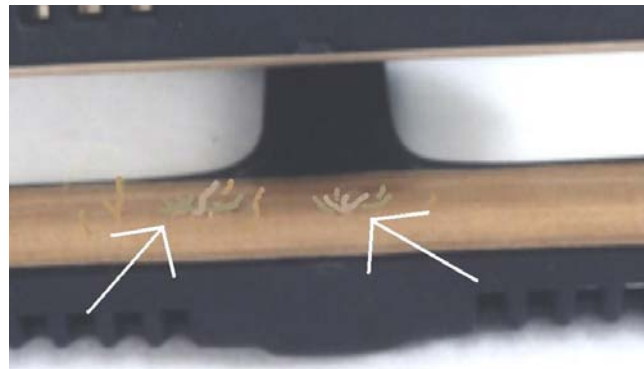
Care and Maintenance of your Cello Sealer



The brass sealing bar on the cello sealer has a flat narrow jaw which is needed to give you a full and secure seal on the cello film. There are three thicknesses of cello on the market today. You have 100 gauge, 120 gauge and 150 gauge. With experience you will know how long to hold it on the film to create the correct seal. Most often you will only need to hold the jaw for a half second.



Never use this Cello sealer to seal a poly bags. To protect the Teflon tape cover on the sealing bar and the base pads, use a Q-tip and dip it into 3 & 1 Oil! Once coated run it over the teflon cover. This will help prevent an irregular build up of residue that would cause poor seals. Holding the sealer down on you're cello for too long a period will also add residue to the sealing surfaces. Both the top and bottom Teflon covers only need a light coating of oil every time you seal a large quantity of bags.



Look at the small amount of residue left over on the base pad. This was caused by holding the sealer on the cello for too long of a dwell time. This can be removed in most cases with your finger. If you are going to use a sharp instrument such as a knife be very careful not to cut into the teflon tape, as it will ruin the surface.

Additional Sealing Information

To make a round cornered gift basket bag simply cut the cellophane so that it has a wide half arch design, then follow the rounded arch and if need be remove any excess cellophane with a scissors.

Warm-up Time

To save time, when you know that you are going to use your sealer that day, simply plug the sealer in when you open your shop. To turn on the sealer, just push the on switch at the top of the sealer and a red light will come on. By the time you come back to your sealer it will be ready and very hot! Your sealer only draws about 15 watts, much like a small light bulb!

Warning!

The sealing head is very hot and will cause a burn if you place your hand on top of the sealer, so please be very careful in handling the sealer. Never place any plastic or paper on top of the sealer as it will melt the plastic and damage the sealer.

To see a Video of the instructions visit: www.nationalgiftpackaging.com